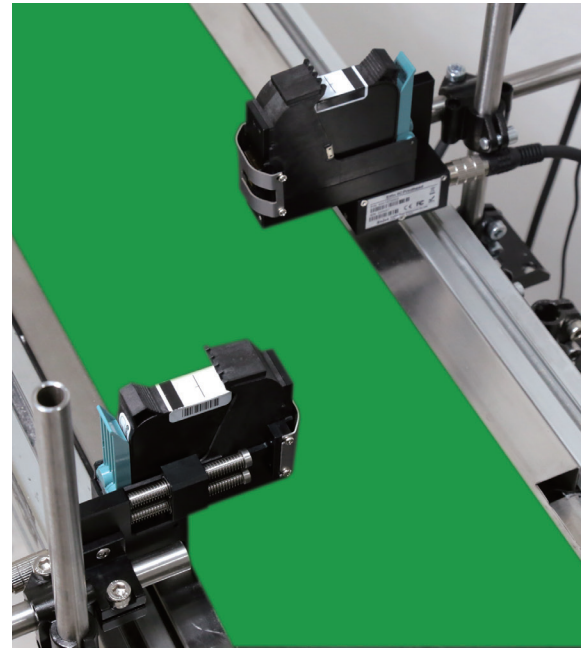
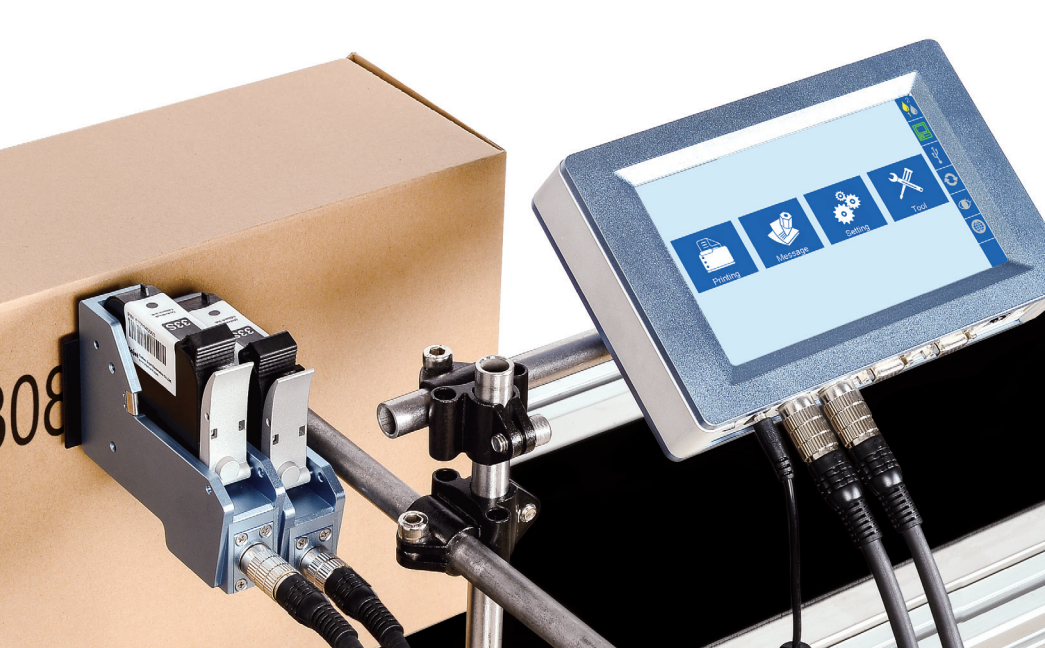


# Elfin II Series

## High Resolution Inkjet Printer



**Elfin II** Double Heads Inkjet Printer

**Elfin IIC** Uneven Surface Inkjet Printer



**Maximum Printable Height 1" (Elfin II)**

Two combined printheads enable the printable height reach 1" (25.4mm).



**Independent Printhead**

Printhead(s) are separated from the controller, multi combinations, easy to operate.



**Flexibly Set Printing Messages**

User can set shifts, counter, date format more flexibly, and also can custom set hex systems.



**Communication Protocol & SDK Support**

Provide communication protocols and SDK to support system integration projects.



**Uneven Surface Printing (Elfin IIC)**

Suitable for curve and uneven surfaces.



**Stretchable Printhead(s) (Elfin IIC)**

Printhead(s) can stretch from 0-10mm according to the surface.



**Timely Database Complement**

PC software support database printing, and the data complement can be done timely and efficiently.



**OEM/ODM Supports**

Offer professional OEM and ODM customized services

## Database Complement Function (Optional)

Support database format: MS Excel, MS Access, SQL, MSCSV.



Database



PC Control



Inkjet Printer

## Communication Protocols

Support both simplified communication protocols, complete communication protocols and also MODBUS/CC-Link protocol.



Modbus



CC-Link

## SDK Support

Support JAVA/C++/C#/Python language, and Android system.



JAVA



C++



C#



Python



Android

## Technical Parameters

### Selectable Languages

Chinese, English, Japanese, French, German, Spanish, Portuguese and Russian;

### Barcodes

GS1, UPCA, UPCE, EAN13, EAN8, INT25, CODE39, CODE128, EAN 128, PDF417, DATAMATRIX, QR;

### Printable Heights (mm)

Elfin II: 1~25.4mm

Elfin IIC: 1~12.7mm

### Printing speed

0~60m/min ( 300DPI )

0~30m/min ( 600DPI )

### Resolution

50~600DPI

### Power Supply

AC 90V-240V/50-60HZ, 60W; (Dedicated AC adaptor)

### Printing Objects

Barcodes, Character, Numeric, Logos, Date/Time, Expiry Date, Shift Code, Counter, Lot-Box Code;

### Port

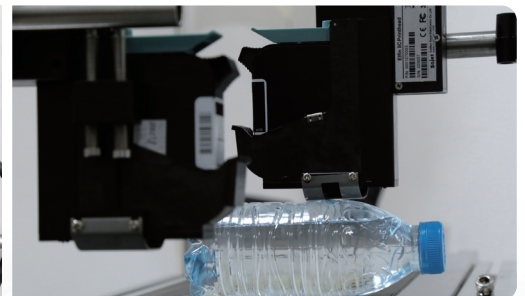
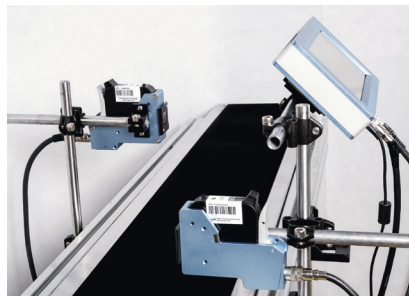
- 1) Ethernet: 100Mb/s, Synchronized control of multiple devices via PC;
- 2) USB2.0: Support U-Disk;
- 3) DB15: For external devices like photocell, synchronizer or alarm kit connection;

### Mounting

Standard side, downside and anti-shock printing bracket;

### Product Certification

CE、FCC;



## Dimensions

Controller (H\*W\*D):: 210\*135\*37mm/8.3\*5.3\*1.46inch

Elfin II printhead (H\*W\*D) : 126\*100\*31mm/4.9\*3.9\*1.2inch

Elfin IIC printhead (H\*W\*D) : 142\*133\*55mm/5.6\*5.2\*2.15inch