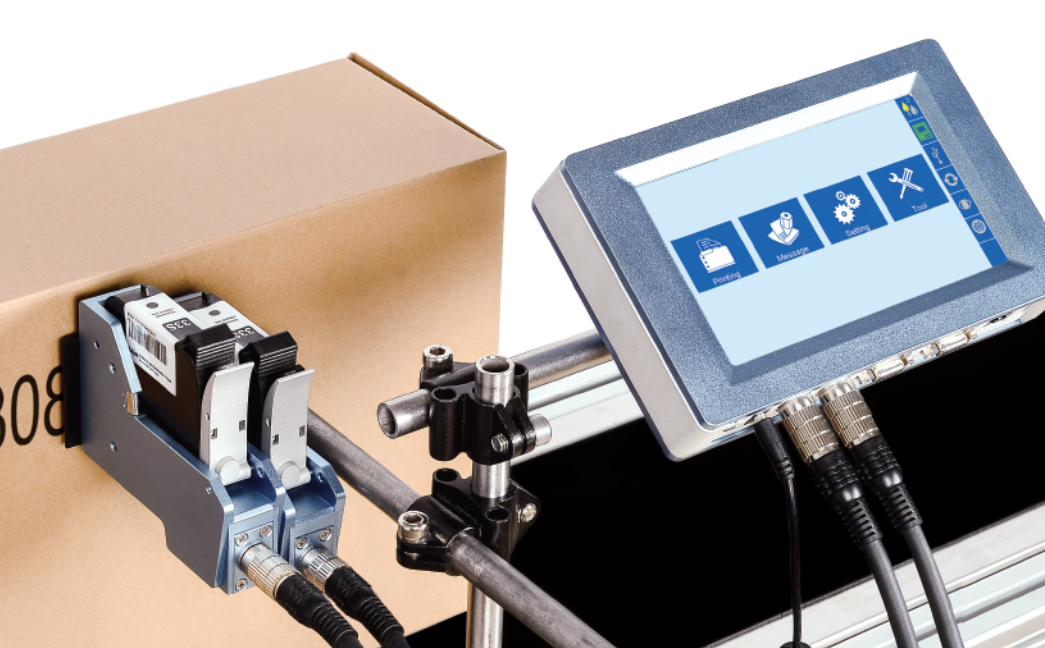


Elfin II Series

High Resolution Inkjet Printer



Elfin II Double Heads Inkjet Printer



Elfin IIC Uneven Surface Inkjet Printer



Maximum Printable Height 1" (Elfin II)

Two combined printheads enable the printable height reach 1" (25.4mm).



Independent Printhead

Printhead(s) are separated from the controller, multi combinations, easy to operate.



Flexibly Set Printing Messages

User can set shifts, counter, date format more flexibly, and also can custom set hex systems.



Communication Protocol & SDK Support

Provide communication protocols and SDK to support system integration projects.



Uneven Surface Printing (Elfin IIC)

Suitable for curve and uneven surfaces.



Stretchable Printhead(s) (Elfin IIC)

Printhead(s) can stretch from 0-10mm according to the surface.



Timely Database Complement

PC software support database printing, and the data complement can be done timely and efficiently.



OEM/ODM Supports

Offer professional OEM and ODM customized services

Database Complement Function (Optional)

Support database format: MS Excel, MS Access, SQL, MSCSV.



Database



PC Control



Inkjet Printer

Communication Protocols

Support both simplified communication protocols, complete communication protocols and also MODBUS/CC-Link protocol.



Modbus



CC-Link

SDK Support

Support JAVA/C++/C#/Python language, and Android system.



JAVA



C++



C#



Python



Android

Technical Parameters

Selectable Languages

Chinese, English, Japanese, French, German, Spanish, Portuguese and Russian;

Barcodes

GS1, UPCA, UPCE, EAN13, EAN8, INT25, CODE39, CODE128, EAN 128, PDF417, DATAMATRIX, QR;

Printable Heights (mm)

Elfin II: 1~25.4mm

Elfin IIC: 1~12.7mm

Printing speed

0~60m/min (300DPI)

0~30m/min (600DPI)

Resolution

50~600DPI

Power Supply

AC 90V-240V/50-60HZ, 60W; (Dedicated AC adaptor)

Printing Objects

Barcodes, Character, Numeric, Logos, Date/Time, Expiry Date, Shift Code, Counter, Lot-Box Code;

Port

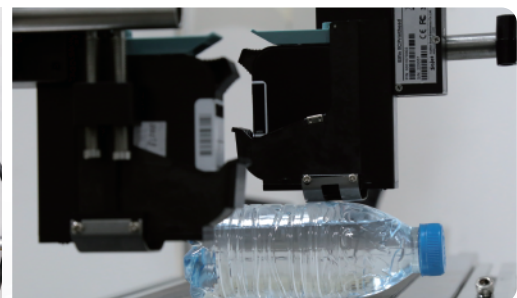
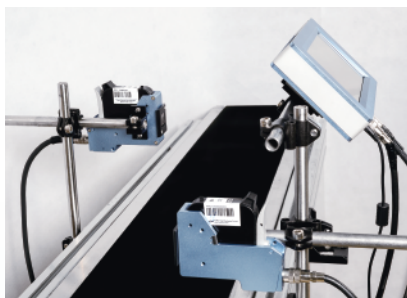
- 1) Ethernet: 100Mb/s, Synchronized control of multiple devices via PC;
- 2) USB2.0: Support U-Disk;
- 3) DB15: For external devices like photocell, synchronizer or alarm kit connection;

Mounting

Standard side, downside and anti-shock printing bracket;

Product Certification

CE、FCC;



Dimensions

Controller (H*W*D):: 210*135*37mm/8.3*5.3*1.46inch

Elfin II printhead (H*W*D) : 126*100*31mm/4.9*3.9*1.2inch

Elfin IIC printhead (H*W*D) : 142*133*55mm/5.6*5.2*2.15inch