



DESIGNED TO ADDRESS THE NEEDS OF INDUSTRIAL USERS WITH AN IMPRESSIVE COMBINATION OF FUNCTIONALITY AND SIMPLICITY IN ONE, MAKING IT AN IDEAL SOLUTION FOR A RANGE OF CODING AND MARKING APPLICATIONS.



FOOD



BEVERAGE



COSMETICS



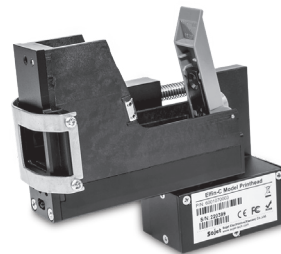
PHARMACEUTICAL



LUMBER



ELECTRONICS



ALTERNATIVE  
"C-MODEL"  
PRINTHEAD FOR  
UNEVEN SURFACES



Clean printing technology - no heavy odors. Eliminate the mess and flushing of solvents associated with traditional coding solutions.



User-friendly touchscreen interface - icon-based controller with easy menu navigation for a more intuitive interaction.



Simple integration - with its adaptable hardware, and versatile software, add it to almost any production environment.



Wide range of inks - our portfolio of water and solvent-based inks can match your diverse printing requirements.

## TECHNICAL SPECIFICATIONS

TECHNOLOGY	HP THERMAL INKJET 2.5 TECHNOLOGY
VERTICAL PRINT RESOLUTION	300 DPI
HORIZONTAL PRINT RESOLUTION	300 DPI
MAXIMUM PRINT SPEED	198 FT/MIN (60M/MIN) @ 300 DPI (DEFAULT)
PRINT DISTANCE	UP TO 8MM (NOZZLE TO PRINT SURFACE)
STORAGE CAPACITY	UP TO 500 UNIQUE MESSAGES
TIME & DATE	REAL-TIME INTERNAL CLOCK
COMMUNICATION INTERFACE	ETHERNET, USB 2.0, AND RS232 PORTS
TOUCHSCREEN	7 INCH (17.8 CM) FULL COLOR LCD TOUCHSCREEN DISPLAY
PRINthead CABLE	4 FT (1.2 M) LENGTH, OTHER LENGTHS AVAILABLE
LOW INK INDICATOR	ALERT ON TOUCHSCREEN DISPLAY, ALARM LIGHT BEACON IS OPTIONAL
INSTALLATION	MOUNTING BRACKETS FOR SIDE PRINTING OR DOWN PRINTING
ELECTRICAL REQUIREMENTS	100-240 VAC, 50/60 HZ, 90W (SPECIFIED AC ADAPTER)
AGENCY CERTIFICATIONS	CE, FCC

## SOFTWARE SPECIFICATIONS

PRINT CAPABILITY	ALPHANUMERIC TEXT, TIME & DATE, LOGOS, ITEM NUMBERING, SHIFT CODES, BARCODES, VARIABLE DATA
DATABASE CAPABILITY	ETHERNET COMMUNICATION PROTOCOL FOR EXTERNAL COMMUNICATION
AVAILABLE LANGUAGES	ENGLISH, SPANISH, PORTUGUESE, GERMAN, FRENCH, CHINESE, JAPANESE, AND RUSSIAN
PRINTING DIRECTIONS	R-L, L-R, INVERT, REPEAT
MESSAGE LENGTH	UP TO 9.8 FT (3 M)
MINIMUM PRINT HEIGHT	3/64 INCH (1 MM) OR SINGLE CHARACTER FONT HEIGHT
MAXIMUM PRINT HEIGHT	1 INCH (25.4 MM) OR SINGLE CHARACTER FONT HEIGHT
NUMBER OF PRINT LINES	1, 2, 3, 4 OR MORE LINES OF HIGH-RESOLUTION CODES
INK USAGE	AUTOMATICALLY DETECTS INK TYPE AND CALCULATES USAGE PER MESSAGE

## OPTIONAL ACCESSORIES



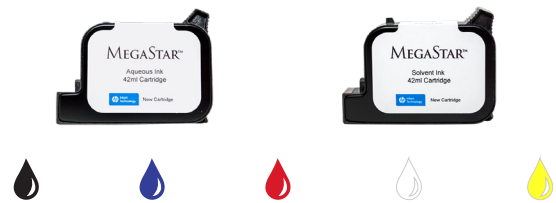
Photoelectric  
Sensor

Rotary  
Encoder

Alarm  
Light

Floor  
Stand

## INK SOLUTIONS



A wide range of inks available for both porous and non-porous materials such as flexible film, plastic, glass, treated substrates, paper carton, wood, and metal among others.